

Hand Held Digital Thermohygrometers



FEATURES

- Soft keyboard, PC interface
- MIN / MAX /HOLD function
- Calculation of dew point
- Calculation of dew point distance
- Software controlled display & logger functions.
- Logger function with 16200 values
- Alarm function with buzzer signal
- Real time clock with date and year

DESCRIPTION

Digital Thermohygrometers of MH Series : MH-3330 & 3350 are handy, accurate & reliable instruments for measurement & recording of humidity, temperature & pressure. The MH Series is very flexible and suitable for simple & complex applications. High performance sensors provide high accuracy during signal recognition & processing. The soft keyboard grants a protection against dust & humidity. Additional features like MIN/MAX values hold function, alarm function, Data memory & logger functions with PC interface make MH Series Thermohygrometers extremely versatile and state of the art instruments.

TECHNICAL SPECIFICATION

Measurement Inputs : (Mini-DIN Socket & MINI T/C socket)	
Air Humidity	: Capacitive sensor
Temperature	: Pt 1000 / 2 wire
Surface temp	: Type K (NiCr-Ni)
Measurement range / resolution :	
Air Humidity	: 0.0100% RH / 0.1% Rh
Temperature	: -40.0 120.0°C / 0.1°C
Surface temp	: -80.0 250.0°C / 0.1°C
Accuracy :	
Air Humidity	: ± 0.1% FS ±1 digit
Temperature	: ± 0.2% FS ± 1 digit
Surface temp	: ± 0.5% of rdg. ± 0.5°C ± 1 digit
Units :	
	: % RH, °C, °F (selectable)
Power Supply :	
	: 9V block battery, Mains adapter 12V DC
Casing :	
	: Shock-resistance ABS plastics, Pop up clip, IP 65 (front)
Dimensions / weight :	
	: Approx. 140 x 70 x 30 mm / 160 g
Equipment :	
<input type="checkbox"/>	Soft keyboard, PC Interfaae, (Only online Data logging on PC)
<input type="checkbox"/>	MIN / MAX / HOLD function,

SENSORS

MH-3330 & 3350 have high performance sensors with electronic linearization of the characteristic provide high accuracy during signal recognition and processing. Matching additional thermocouple sensors, K type are available for temperature measurement.

APPLICATIONS

- ★ Temperature, relative humidity, dew point, maximum and minimum temperature measurement in climatic chambers, incubators and storage houses for environment condition monitoring in laboratories and research benches.
- ★ Pharmaceuticals, drugs and chemical production plants.
- ★ Calibration laboratories and quality assurance centres.

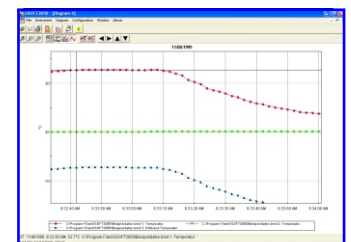
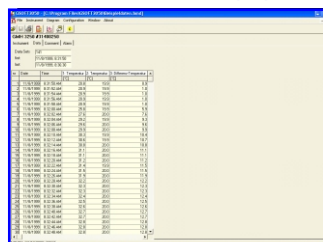
DESCRIPTION

MH-3350 Thermohygrometer is designed & Manufactured with latest technology to handle complex functions of Data logging, PC interface and data transmission for on-line & off-line operations. Integrated memory stores upto 16200 measurement values. Two logger functions are available. STORE mode, data transfer is carried out via key stored and 99 data sets can be stored. In CYCLE mode automatic entry's carried out in a preset time interval. 1800, 2200 or 5400 data sets can be stored.

TECHNICAL SPECIFICATION

Measurement Inputs : (Mini-DIN Socket)	
Air Humidity	: Capacitive sensor
Temperature	: Pt 1000 / 2 wire
Surface temp	: Type K (NiCr-Ni)
Measurement range / resolution :	
Air Humidity	: 0.0100% RH / 0.1% Rh
Temperature	: -40.0 120.0°C / 0.1°C
Surface temp	: -80.0 250.0°C / 0.1°C
Accuracy :	
Air Humidity	: ± 0.1% FS ±1 digit
Temperature	: ± 0.2% FS ± 1 digit
Surface temp	: ± 0.5% of rdg. ± 0.5°C
Units :	
	: % RH, °C, °F (selectable)
Power Supply :	
	: 9V block battery, Mains adapter 12V DC
Casing :	
	: Shock-resistance ABS plastics, Pop up clip, IP 65 (front)
Dimensions / Weight :	
	: Approx. 140 x 70 x 30 mm / 160 g

PC Connection And Software for data logging



- To transfer and document measurement and memory values to a PC, this instrument of the MH series is equipped with a PC interface.
- One can easily create a cost-effective measurement data recognition system by means of software and an interface converter.
- Writing and display functions are provided by the software EBS9M.
- Evaluation of logger and alarm values are carried out with the software module SOFT3050.
- Using the entered and visualized measurements, particular processes can clearly be monitored and evaluated.

* Cable length between instrument and sensor = One Meter